

Introduction to Agri SA

Inleiding tot Agri SA

Christo van der Rheede

Deputy Executive Officer ~ Adjunk Uitvoerende Direkteur

Organisational Framework

Organisatoriesese Raamwerk

Organisational Framework

Support Functions



Finance & IT



Human Resources



Legal



Marketing & Communication



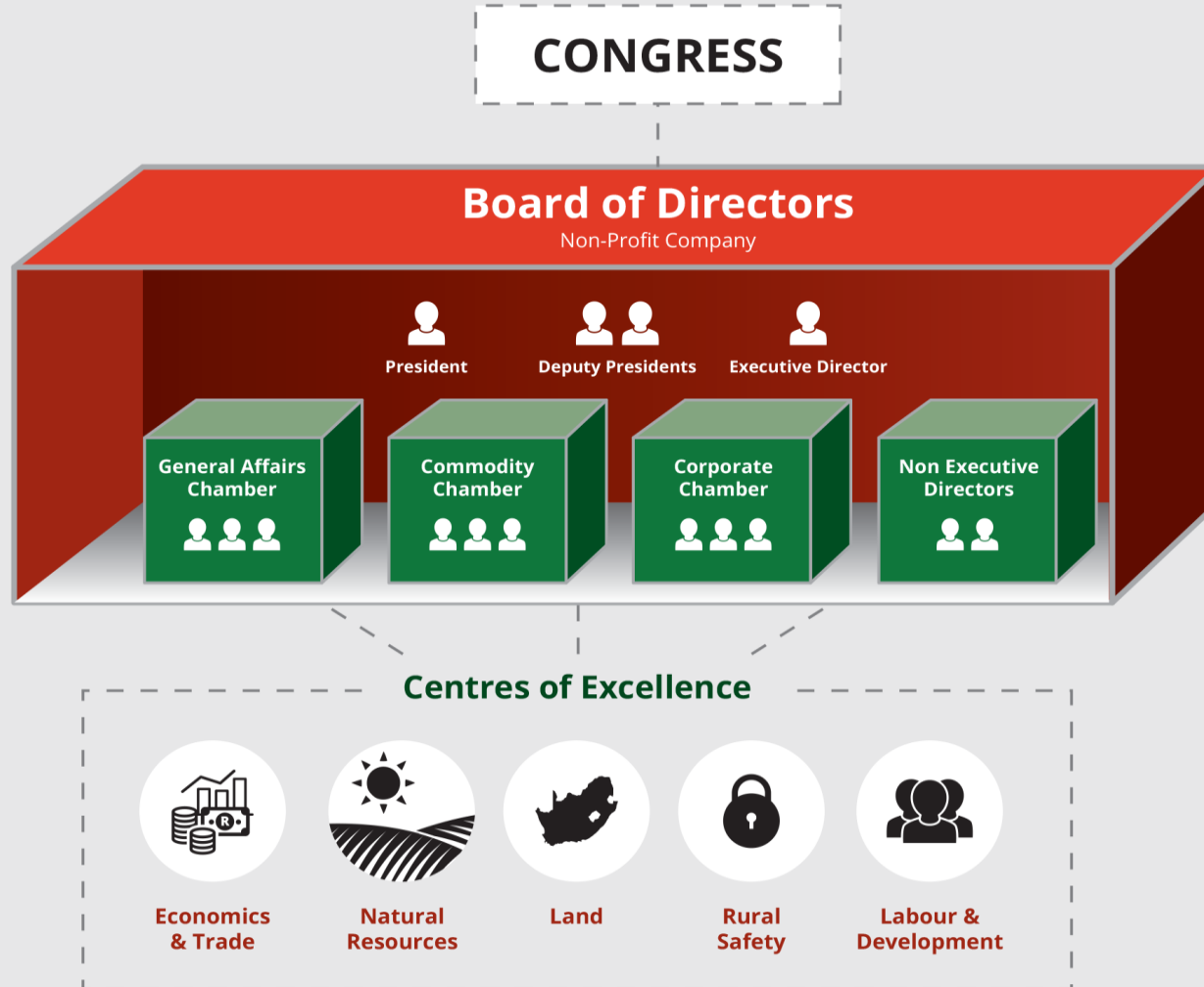
Transformation Hub



Parliamentary Liaison



Risk Management Desk



Core Business

Kernbesigheid

- Agri SA is a services organisation

- Protect and grow the commercial agricultural sector
- Play a critical advocacy role
- Focus on government policy related to
 - Economics and Trade
 - Natural Resources
 - Land
 - Rural Safety
 - Labour and development
 - Empowerment

- Agri SA is 'n dienste-organisasie

- Beskerm en groei die kommersiële sektor
- Vervul 'n kritieke voorspraakrol
- Fokus op regeringsbeleid wat verband hou met
 - Ekonomie en Handel
 - Natuurlike Hulpbronne
 - Grond
 - Landelike Beskerming
 - Arbeid en Ontwikkeling
 - Bemagtiging

Objectives

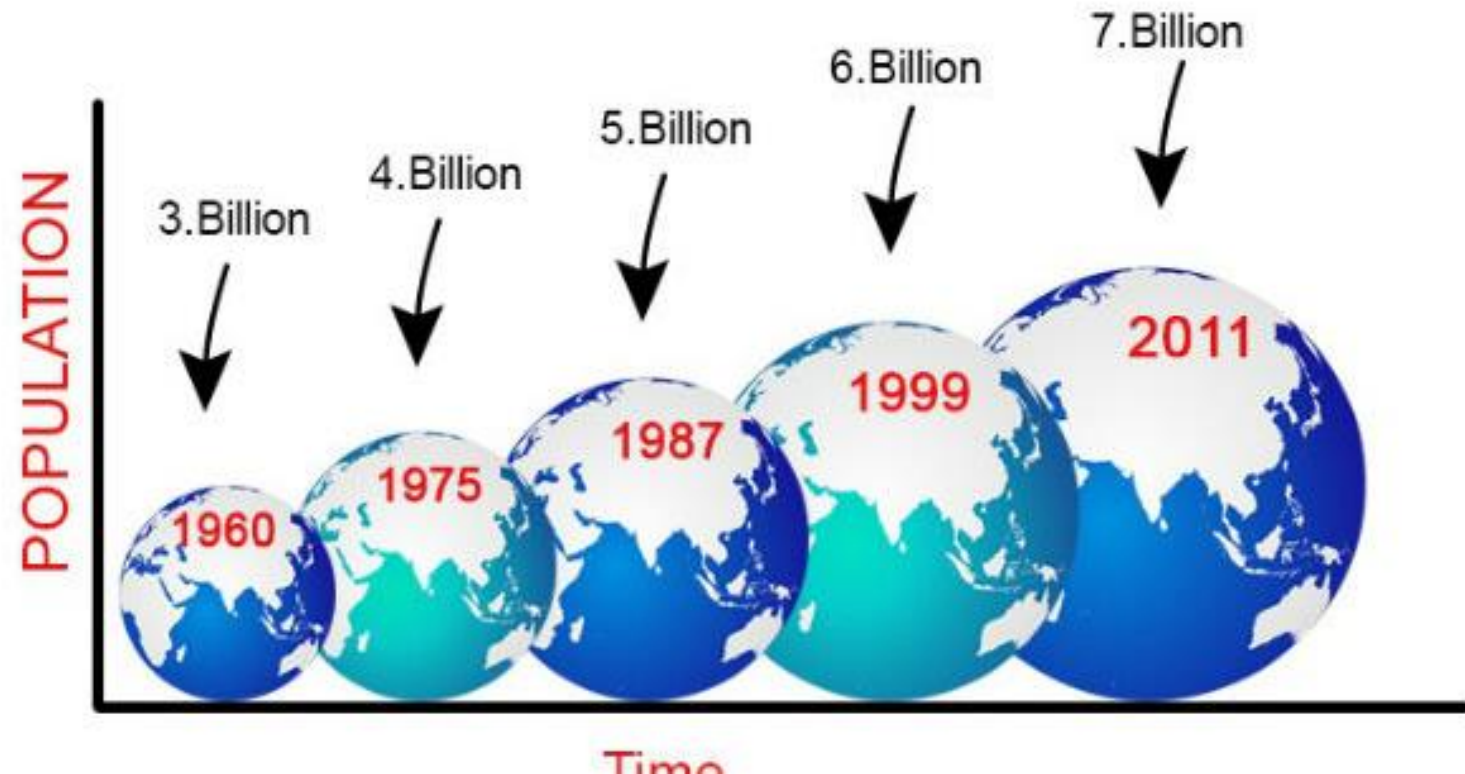
Uitkomstes

- Robust engagement with government
- Identify risks
- Interact with various government departments, ministers, presidency
- Conceptualise and initiate plans aimed at growing commercial agriculture
- Consult with legal experts and where necessary take matters to court
- Agriculture as a driver of economic growth

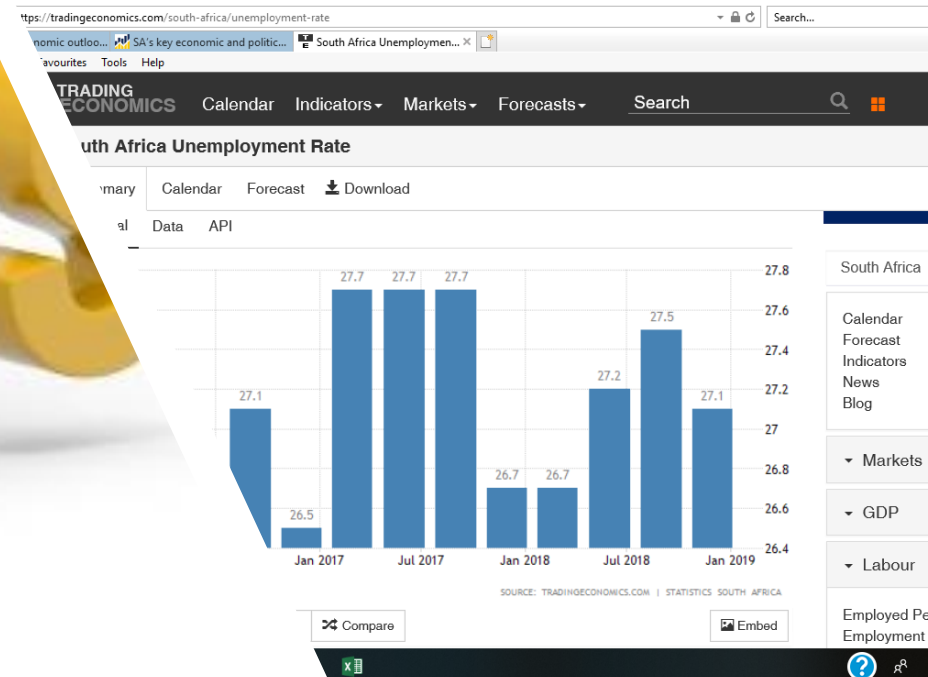
- Robuuste interaksie met staat
- Identifiseer risiko's
- Interaksie met verskillende regeringsdepartemente, ministers, presidensie
- Konseptualiseer en inisiëer planne om kommersiële landbou te groei
- Konsulteer met regs kundiges waar nodig en oefen regs remedies uit
- Landbou as 'n drywer van ekonomiese groei

Growing Population
Groeiende Bevolking

- In 1950 the world population was 2.5 billion and only 746 million people lived in cities
- By 2014 the world population had reached 7.2 billion with 3.9 billion living in cities
- The world population is projected to reach 9.6 billion by 2050 and urban population 6.4 billion



Unemployment
Werkloosheid



State Owned Enterprises Staatsondernemings



National Budget

Nasionale Begroting



“Render unto Caesar what belongs to Caesar”!! Pay your taxes and Caesar will allocate these to developmental objectives. Otherwise Caesar’s people will break your bones!!

   605

113 Comments 40 shares

 Like

 Comment

 Share

[View previous comments](#)

6 of 113



Mcdonald Sibuyi ...but also Caesar must pay special attention to tenders because that's where monies ment for development disappears.

Like · Reply · 11h



Moahlodi Peter Tsotsotso Caesar cannot expect people who are suffocated by income tax up to 45%, Vat 15%, ridiculous electricity and fuel prices to also pay for using the roads, where is that money supposed to come from?

Disruptions
Ontwrigtings



Disruptions
Ontwrigtings

- Over 200 years ago, more than 90% of Earth's population was engaged in agriculture, but now more than 80% of the populations of OECD major countries are engaged in the service industry. The population engaged in agriculture, at present, is merely 2–3%.
- Not only has the population involved in agriculture been reduced, in most developed countries, the age of individuals in farming households is increasing as well.
- In the Republic of Korea, more than 50% of the population of farm households is over 60 years old, and over 40% is over 65.
- The population of workers around the globe has shifted from agriculture to manufacturing and services industries.
- Thus, in the current world economy, only 5 % of the world's population works in agriculture, yet it accounts for more than 60% of the world's business
- Protecting, promoting and growing the agricultural sector is Agri SA's core business.

In conclusion

- We do have a constitutional obligation to ensure that all of our people do have adequate access to food, water, shelter and decent public services
- Compromising this constitutional obligation will have serious implications for all of us
- Let us all work together to ensure a better South Africa for all of our people